

LAStools ArcGIS Pro Plugin Manual

Version 1.0.0 // December 12th, 2022

1. Introduction

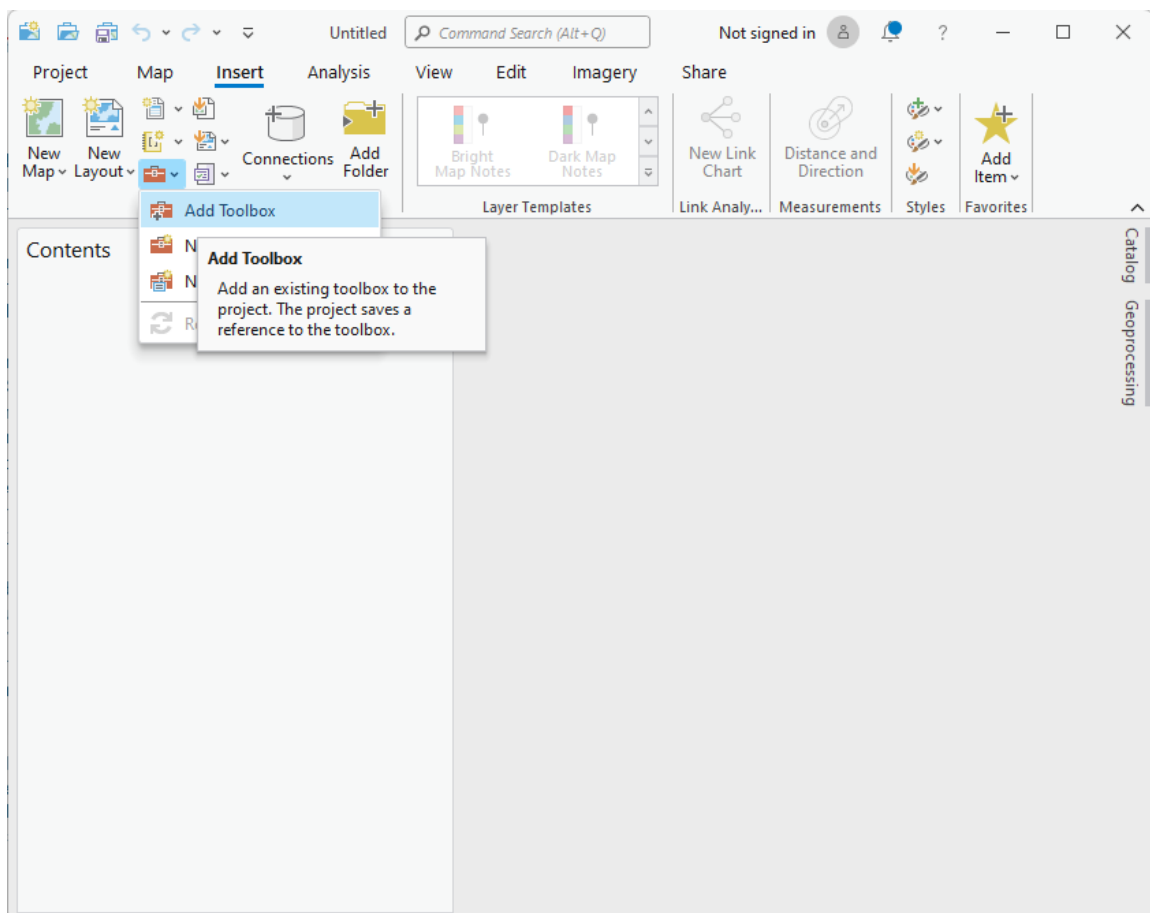
LAStools is a collection of highly efficient, batch-scriptable, multicore command line tools for processing LIDAR. ESRI's ArcGIS Pro is a popular and widely used GIS-software. The LAStools ArcGIS Pro Plugin enables the integration of LAStools in ArcGIS Pro.

2. Requirements

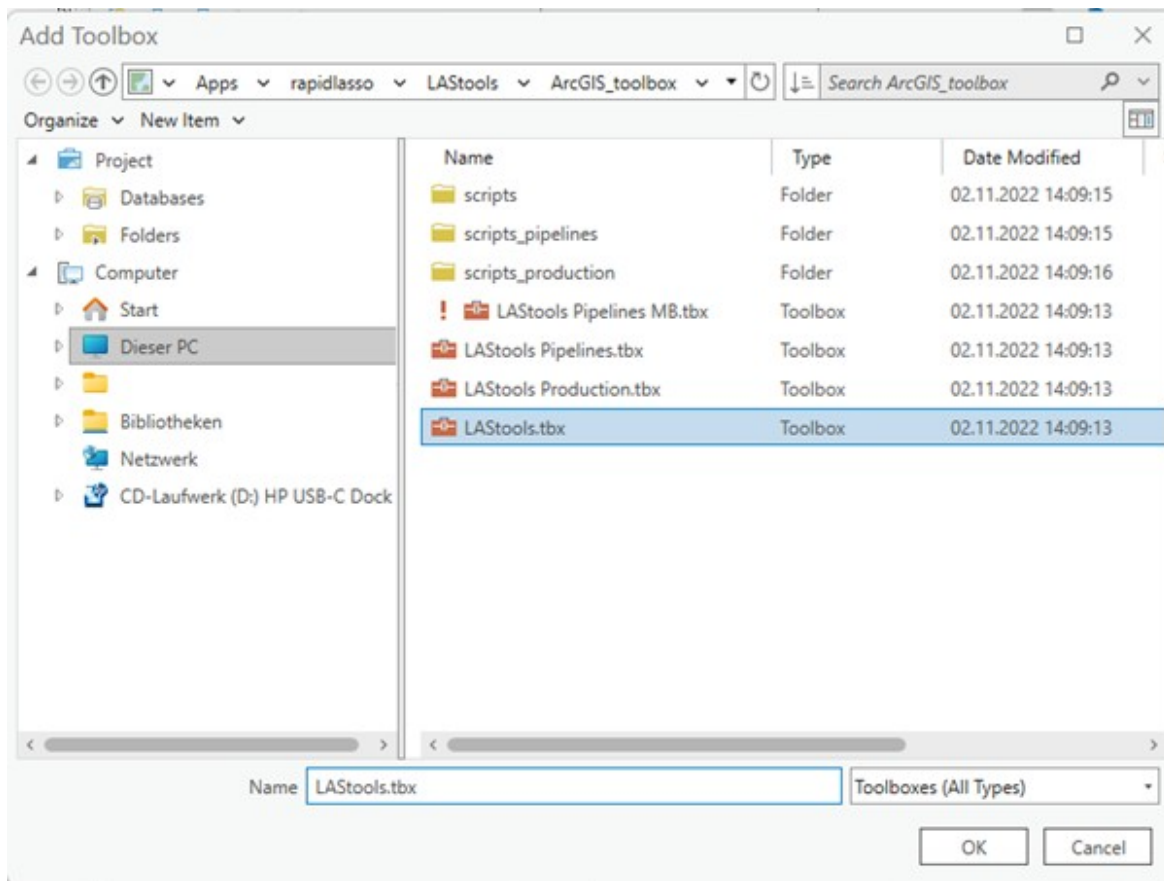
ArcGIS Pro and LAStools must be installed. Current versions of LAStools can be downloaded from <https://rapidlasso.de/customers/>. The LAStools ArcGIS Pro Plugin is available free of charge. After installing LAStools in c:\lastools, you can find the ArcGIS Pro Plugin in c:\lastools\ArcGIS_toolbox.

3. Integration in ArcGIS Pro

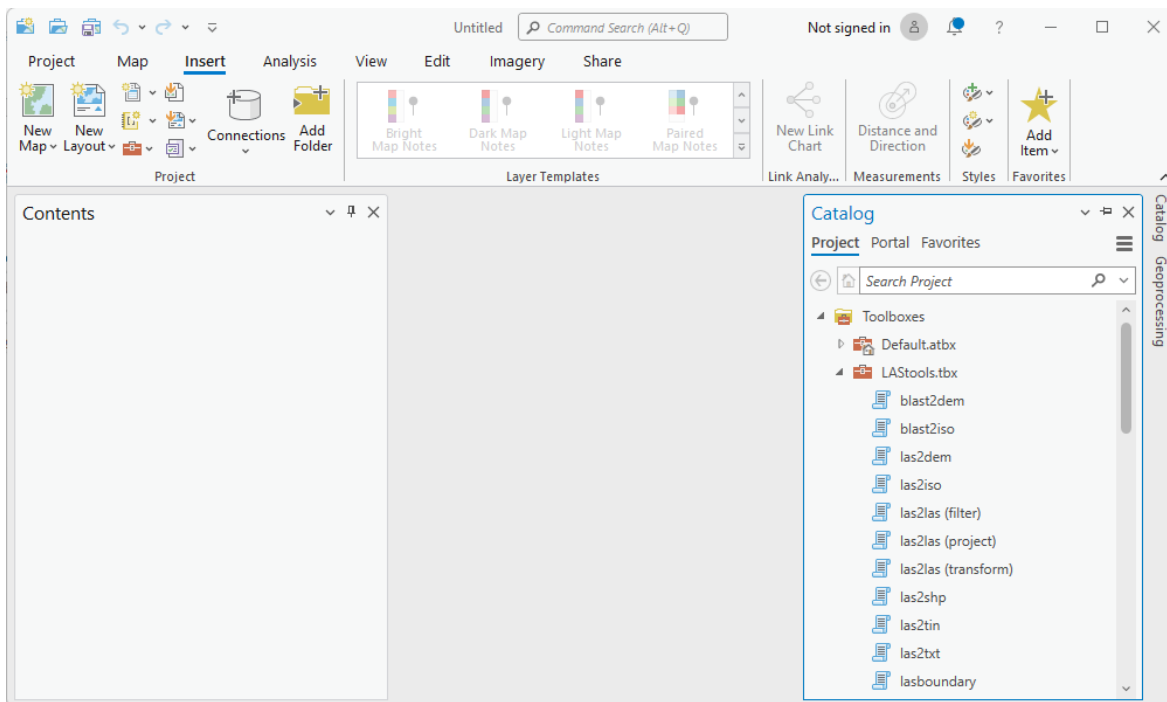
After starting ArcGIS Pro and opening a new project, choose “Add Toolbox”:



Select the LAStools.tbx file from the LAStools plugin folder:

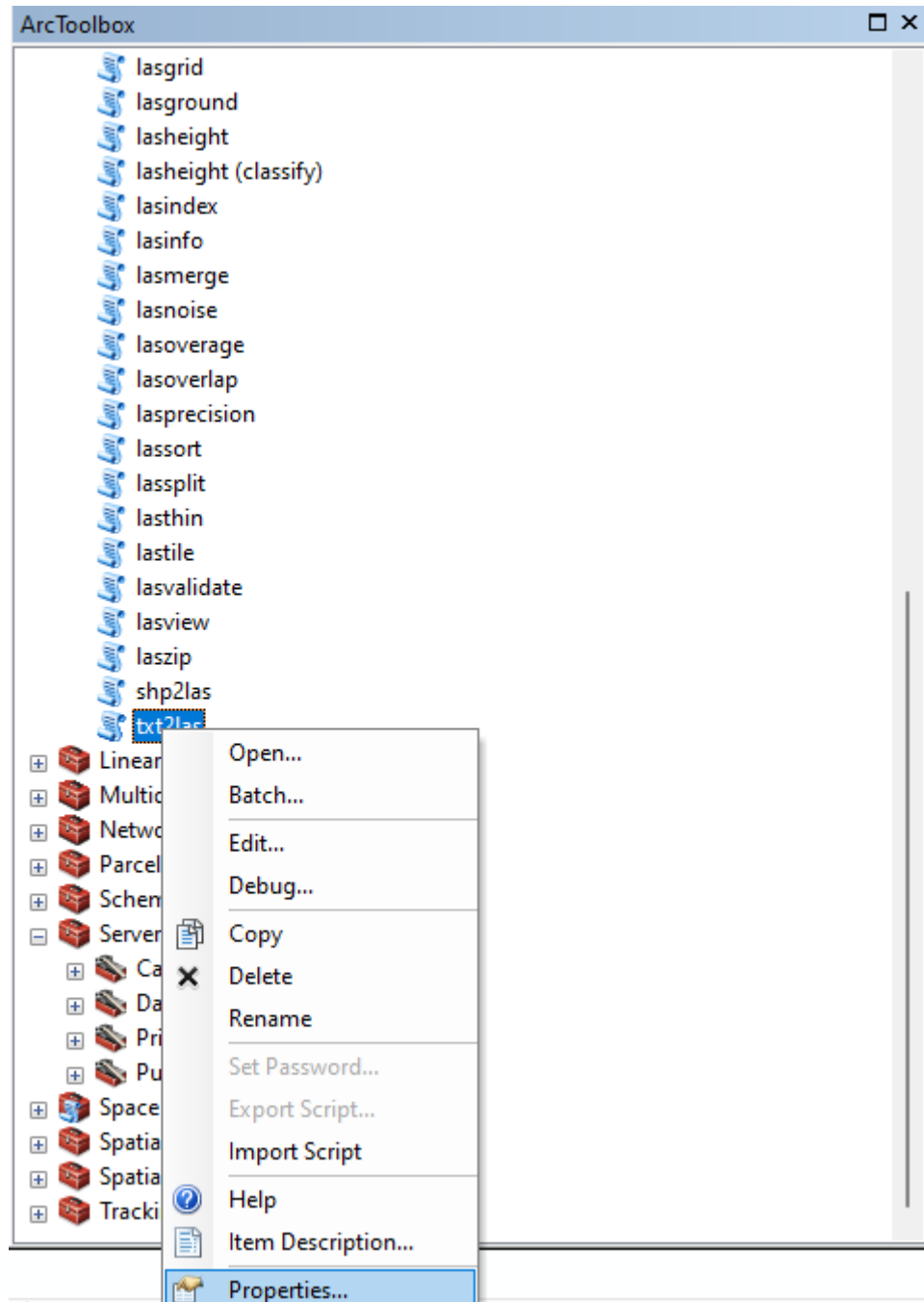


After importing the tbx file, all tools are displayed in the catalog window:

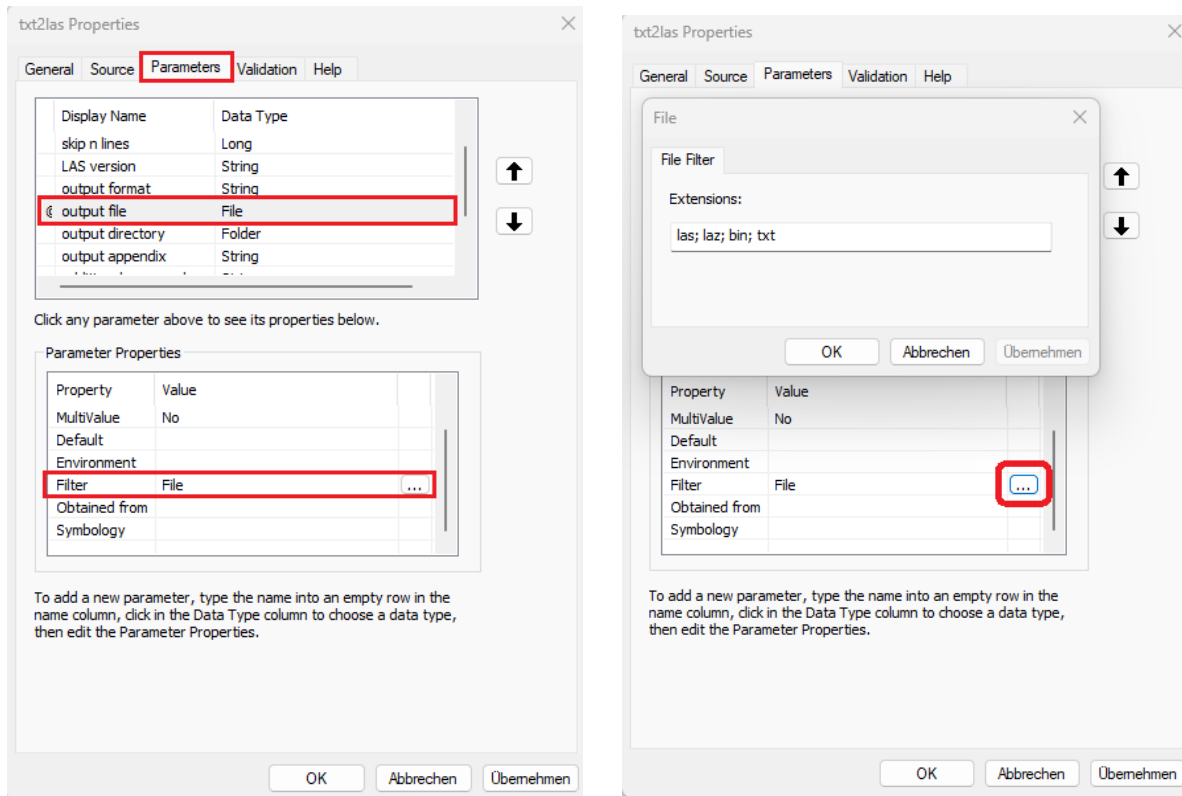


4. Plugin Settings

A plugin's settings can be adjusted by right-clicking on a tool and selecting "Properties":



There, for example, the desired file extensions can be adjusted:



5. Disclaimer

The LAsTools Software Suite and this documentation are provided "as is" without warranty or implied warranty of merchantability or fitness for a particular purpose. ArcGIS Pro is owned by ESRI. The product name ArcGIS Pro is only used to explain the LAsTools plugin. rapidlasso GmbH does not own or claim any rights to the names "ESRI" or "ArcGIS Pro".

6. Imprint

rapidlasso GmbH
Friedrichshafener Straße 1
82205 Gilching
GERMANY



www.rapidlasso.de
info@rapidlasso.de